

Installation and Cleaning Guide for Grabo Smart-Fit sports parquet system

Graboplast Floor Covering Manufactures Ltd.
H-9023 Győr, Fehérvári út. 16/b. Telefon: (+36) 96 506 100
www.graboplast.com



Grabo Smart-Fit is an area elastic engineered sports parquet system manufactured with 5G click system, it should be installed floating without any glue.

1. Preparation of the Site

- The premises where the parquet will be laid must be empty, clean and dust-free.
- The moisture content of the sub-floor must be <1,8 CM% for concrete and cement sub-floors, and <0.3 CM % for anhydrite sub-floor.
- The sub-floor must be levelled, dry, flat, clean and firm.
- The permissible sub-floor flatness tolerance should be max. 2 mm/m.
- Levelling compound must be used to eliminate level differences and surface irregularities larger than that.
- Heating units and other similar equipment must be mounted and tested prior to the installation of the parquet.
- The doors and windows must close well and have heat insulation.
- An atmosphere with a relative humidity between 40 and 60% must be ensured during laying and use. Temperature should be minimum 15 C° during laying and use.
- If the moisture content of the sub-floor is higher 1,8 CM% but less than 5 CM%, always use Grabo Vaporex dampproof underlay floor.
- The doors and windows should close well and have heat insulation.
- The manufacturer will not accept claims for damages resulting from improper circumstances.

2. Installation

2.1. General

- It is recommended to lay the sports parquet lengthwise to the main source of light, and perpendicularly to the underlay.

3. Cleaning and maintenance

Make sure that the parquet is exposed to the least extra contaminations during the use. Use a floor mat before the door to avoid the penetration of fine sand grains as these are the finest abrasive grits that can wear the lacquer surface.

For preservation purposes regular daily cleaning and periodical wet cleaning either manually or mechanically depending on the intensity of use are recommended.

1. Daily dry cleaning

Remove the solid contaminations with a broom and a wide mop of synthetic or micro fibres or with a vacuum-cleaner.

2. Slightly wet daily cleaning

This can be performed manually using the two-bucket method and a cotton or micro fibre mop or with a single-disc cleaning machine. Use a white pad for the disc cleaner machine.

Use only a very slightly wet mop or a very slightly wet pad. Never leave water on the surface!

Never use intensive wet cleaning otherwise the parquet system can get damaged, the surface can swell, water spots may form and the surface could shrink when dried causing gaps between the boards.

The frequency of wet cleaning depends on the intensity of use and contaminations.

Recommended cleaning agent:

Wood Floor Cleaner / made by: dr.Schutz
Dilution: 1: 200

Bona Sportive Cleaner / made by: BONA
Dilution: 1: 200

Removal of spots, shoe traces and adhering contaminations:

Elatex / made by: dr. Schutz
Spray Elatex onto a white cloth and carefully remove the spot, then clean the surface with Wood Floor Cleaner, and wipe the surface.

Bona Sportive Cleaner Plus / made by: BONA
Dilution: 1 cap/100 ml water

Immerse the white cloth into the diluted sport remover, wring it out so that the cloth is only slightly wet, carefully

remove the spot, clean the surface with Bona Sportive Cleaner, then wipe the lacquered parquet.

4. Sound insulation

Sound insulation material Vaporex 40 can be installed over the subfloor to increase the sound insulation property of the system.

5. Game line painting –Grabo Color

This is a two-component polyurethane paint for painting the game lines to mark and distinguish between various parts of the sports ground. Available in yellow, blue, red, white and black colour.

6. Floor heating

Installation over sub floor heating has some important issues. Maximum allowed temperature on top of the sub-floor is 27 °C.

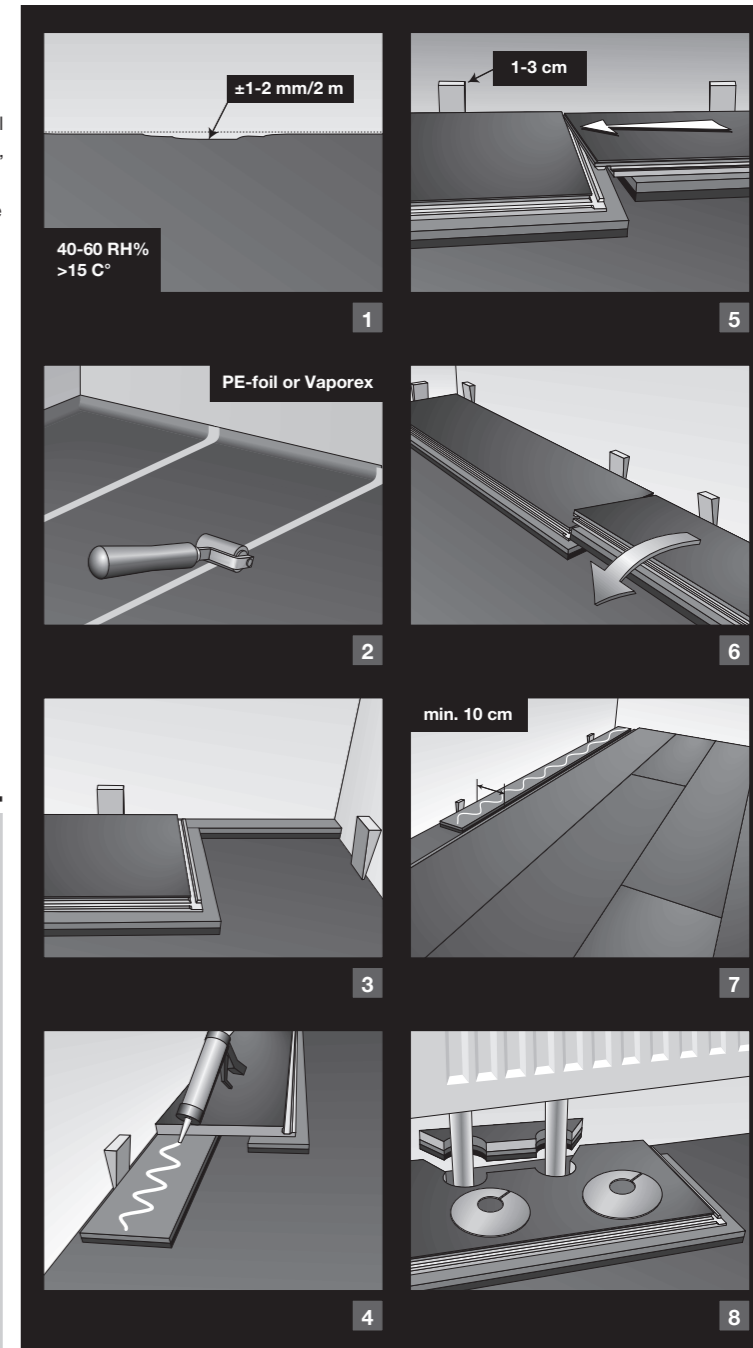
Only oak wood parquet can be installed over floor heating. Follow the heating regulation recommendations given by the system supplier.

- In narrow places install the sports parquet parallel to the length way.
- Measure the room before starting installation. Take the dilatation gap requirement of the floor perimeter into account.
- The board width of last row shall not be less than 10cm. If so, adjust the width of the first row to be installed.
- Damp proof membrane Grabo Vaporex should be laid with the pattern facing down, unrolled and placed edge-to-edge and then fastened on the back (i.e. top) side with polymeric adhesive tape. By the wall its edges should be folded up min.3-5 cm. PE-foil should be taped at the joints as well.
- Each board should be inspected to ensure that the quality is acceptable. No claims relating to surface defects can be accepted after installation.

2.2 Floating installation

- Measure the exact size of the room and calculate the number of rows taking into account the size of dilatation gap. Depending on the result you must start the installation with full board or cutted board.
- Leave an open expansion gap around the whole perimeter.
- Size of expansion gap must be in accordance with the hall size, below 100 m² 1-1,5 cm, between 100 and 500 m² 2-2,5 cm dilatation gap required.
- Keep dilatation gap also at pipes, stairs, columns, doorframes and thresholds.
- Start in a corner with groove side facing out toward the room. Proper expansion gap must be checked once first three rows are installed.
- The next board is laid at an angle (approx 30°), place this plank gently and tight to the short end of the first one.

- Fold the panel down in a single action movement. During the fold down, make sure the panels are tight against each other. Afterwards press or slightly knock at the short end just installed. 5G installation secures installation with a visible and audible locking function. When a panel is folded down, a flexible plastic tongue is pushed into a tongue-groove. As the panel reaches its final position, the locking tongue snaps out into a wedge groove, emits a "click" sound and locks the product vertically.
 - At the end of the first row, put a distance of dilatation to the wall and measure the length of the last plank to fit. Cut with a jig saw – hardwood turned down.
 - Begin the second row with the off-cut board from the first row, which must be minimum of 50 cm long.
 - Continue the laying second and next rows. Minimum distance between short ends of planks in parallel rows shall not be less than ca 400 mm.
 - Last row: If the distance between the wall (minus dilation gap) and the last row is between 10-19 cm, in this case place support element in the aperture and glue the cutted parquet on the surface of support element with 1-component polyvinylacetat glue.
 - If the distance between the wall (minus dilation gap) and the last row is less than 10 cm, in this case the elements of first row should be cutted as well in order to fulfill the requirement, that the width of last row should be more or equal 10 cm. Put support element in the gap and glue the cutted parquet element on the surface of support element with 1-component polyvinylacetat glue.
- Aperture for piping must be spaciously so as to allow to move free. The apertures should be covered with pipe-collars.
- The skirtings must be fixed to the walls. In case of Vaporex underlay use ventilated skirting.



7. Other important information

A Smart-Fit rendszer hangszigetelő tulajdonságának It is advisable to use temporary shielding to protect the surface of the sports parquet during non-sporting events. Spike-heeled shoes leave traces even on the hardest wood.

The rolls of extending stands extremely wear the surface therefore separate pads must be used for the protection of the sports parquet surface. The use of Grabo Protectsport protective floors are recommended.

A temperature of 18 to 25 °C and relative humidity of 40 to 60% are required for parquet flooring not only during installation but also during operation of the establishment. If necessary install a humidifier/dehumidifier (HVAC) to ensure the climate required.

Proper ventilation of the room must be ensured.

In centrally heated premises the installation of vaporizers and continuous control of the humidity are recommended in order to prevent the shrinking and cracking of the parquet boards. The installed parquet flooring should not directly contact walls or other building structures.